

This drawing is the property of AKSWard Limited. The drawing is issued on the condition that it is not copied, reproduced, retained or disclosed to any unauthorised person, either wholly or in part without the written consent of AKSWard Limited. Do NOT scale from this drawing. AKSWard takes no responsibility for errors during photographic reproduction or printing. Any discrepancies are to be reported to the engineer immediately.

GENERAL NOTES

- All setting out to be in accordance with the Architects drawings. Any discrepancies between the Engineers and the Architects drawings to be referred to the Architect before proceeding. Dimensions must not be scaled.
- New Floor Slab**
Finishes on 150mm thk RC35 concrete slab; A142 mesh in top with 50mm cover. DPM to Architect's specification. 190mm dp approx. min. Type 1 stone (refer to detail sections for variance).
- M305 galvanised restraint straps x1000mm lg at 1500mm c/c pulled tight to inner leaf and screwed to solid noggins and joists by 5.6mm (No. 12) DIA.x 63mm lg woodscrews
-



IDENTIFIES RISKS DURING THE CONSTRUCTION PROCESS ON THE DRAWINGS:

NOTE: The list below and notes on the drawing identify risks which are deemed to be unusual, abnormal, residual or unexpected to a competent contractor carrying out the works. These notes relate to risks which we have been unable to design out.

P03	Minor amendments Notes added.	CB	JW	15.02.21
P02	Preliminary issue	CB	JW	05.01.21

Rev.	Amendment	Drn	Chkd	Date
PRELIMINARY				
Drg. Status		Suitability		

AKSWard²
CONSTRUCTION CONSULTANTS

Seacourt Tower
West Way
Oxford
OX2 0JJ

London
 Hitchin
 Oxford
 Southampton
 Birmingham

Tel: 01865 240071
 Fax: 01865 248006
 e-mail: oxford@aksward.com
 web: www.aksward.com

Client **Kidlington Methodist Church**

Project **Transformation
Kidlington Methodist Church
Kidlington**

Title **Ground Floor Plan
showing Structure Over**

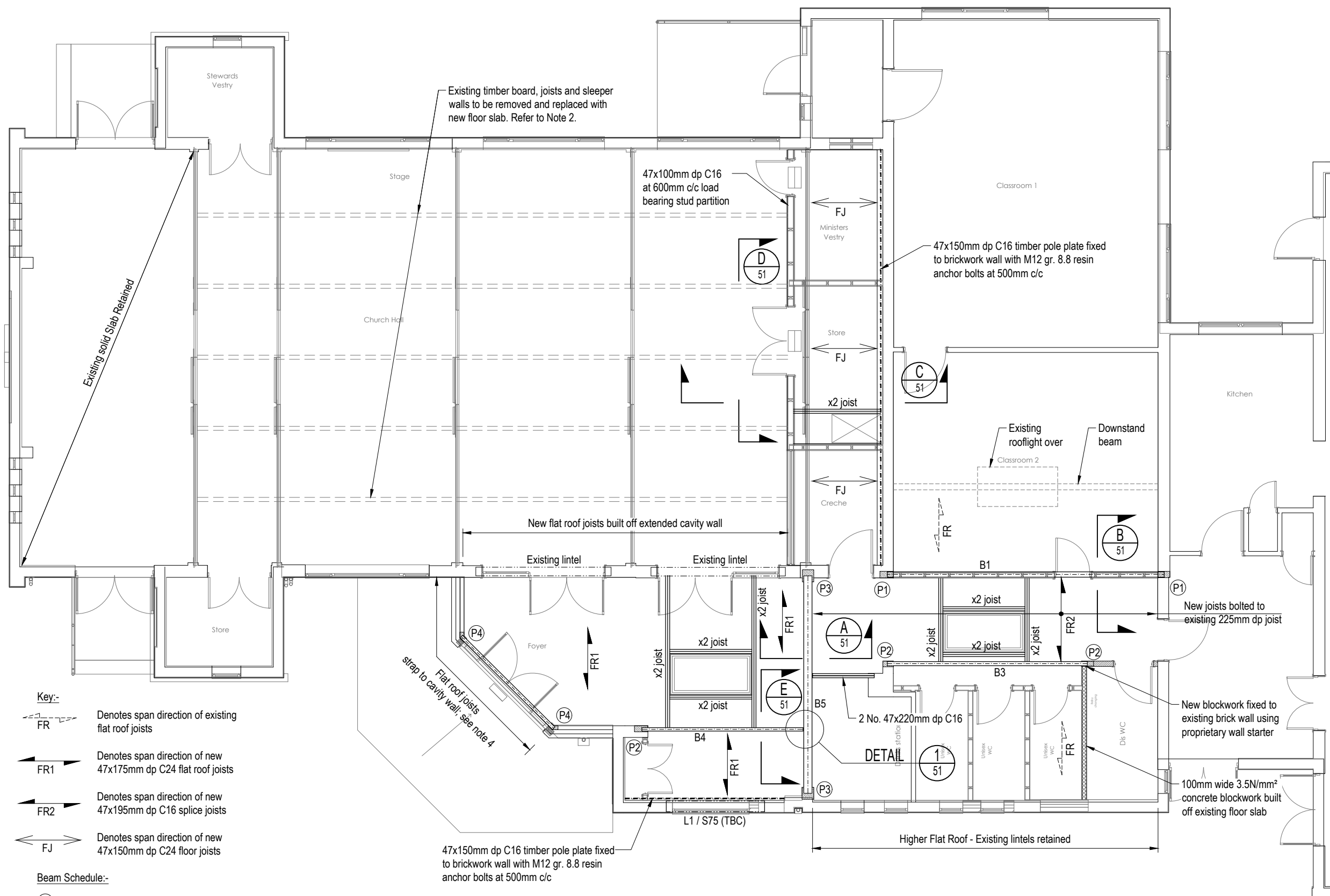
Reviewed Scheme JW Date 11.12.20

Reviewed Final Date

Scales at A3 1:100 Project No. **X202409**

Project Ref. Originator Zone Level Type Role Drg No. Rev.

SW-AKSW-XX-XX-DR-S-01 - P03



- Key:-**
- FR --- Denotes span direction of existing flat roof joists
 - FR1 → Denotes span direction of new 47x175mm dp C24 flat roof joists
 - FR2 → Denotes span direction of new 47x195mm dp C16 splice joists
 - FJ ↔ Denotes span direction of new 47x150mm dp C24 floor joists

- Beam Schedule:-**
- (B1)203 x 133 UB 25
 - (B3)178 x 102 UB 19
 - (B4)152 x 89 UB 16
 - (B5)203 x 203 UC 46 with 6mm thk top plate

- Padstone Schedule:-**
- P1300x160x150mm dp concrete padstone
 - P2300x120x150mm dp concrete padstone
 - P3300x280x150mm dp concrete padstone